

MAMPARAS, SILLAS Y BUTACAS

COLORES

Crema	Porcelana
Canario	Cemento
Bugambilia	Onix
Obispo	Granate
Turquesa	Olivo
Eléctrico	Cobre

ESPECIFICACIONES

Fibra:	66% Polipropileno 34% Poliéster
Ancho:	1.40M (±2cm)
Peso:	340 g (11.99oz)
Backing:	Resina Vinil Acrílica

OPCIONALES EN PEDIDOS ESPECIALES	▲ Repelente a las Manchas
	▲ Retardante al fuego

LIMPIEZA Recomendamos utilizar equipo de limpieza profesional ó espuma de jabón suave sin solventes

NOTA El color de la Tela puede tener una pequeña variación entre cada lote

DATOS TECNICOS

	URDIMBRE	TRAMA
Resistencia a la Tracción (lb/f) ASTM D5034-09	311	307.8
Elongación % ASTM D5034	28.8	57.3
Resistencia al Rasgado (g/f) NMX-A-305-INNTEX-1995	12069	10600
Fuerza máxima con costura (lb/f) ASTM D1683	132	133
Deslizamiento Costura (lb/f) ASTM D1683/D1683M-11a 6 mm	142	156

RESISTENCIA

Resistencia a la abrasión (martindale) ASTM D 4966-10	40000 Ciclos
Solidez del Color a la luz AATCC Test METHOD-016-2044	Grado 4

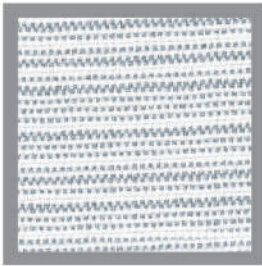


TEMPO XXI S.A. DE C.V.

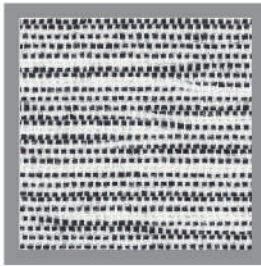
Pasión por el servicio

Tel.: 52(55) 58 12 53 81
58 12 01 38
52 45 21 83

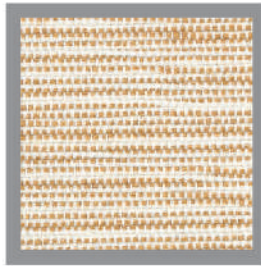
Fax Ext.: 604
email: ventas@tempo21.com



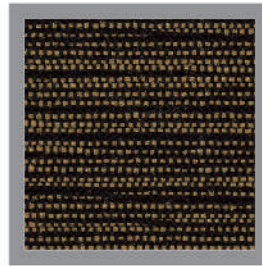
1000-CREMA



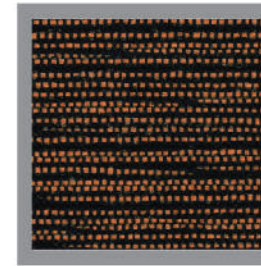
1001-PORCELANA



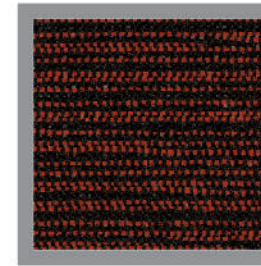
1015-ALMENDRA



1006-NUEZ



1011-COBRE



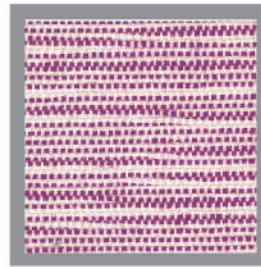
1012-MAMEY



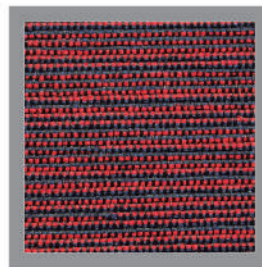
1003-MANDARINA



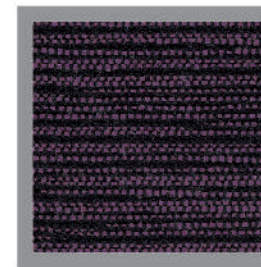
1020-FRESA



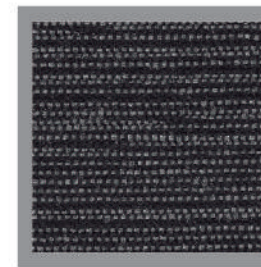
1018-FRAMBUESA



1007-GRANATE



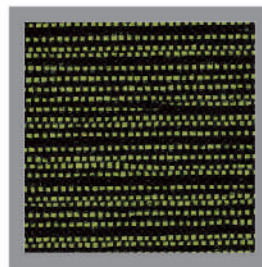
1008-BUGAMBILIA



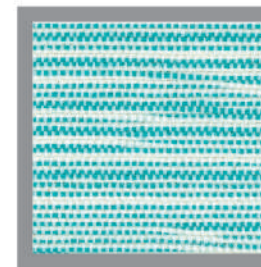
1004-ONIX



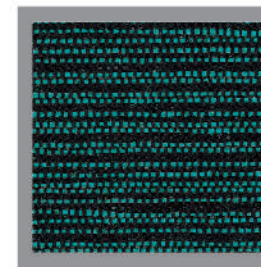
1014-LIMON



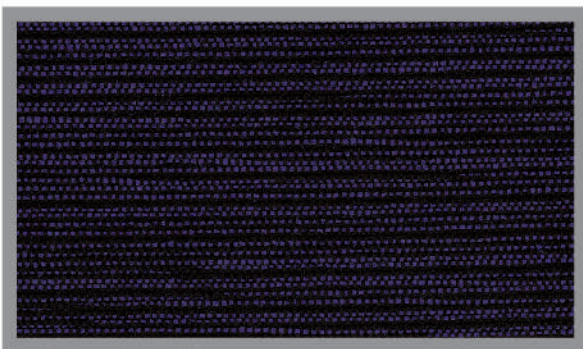
1010-OLIVO



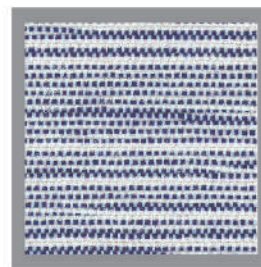
1017-CARIBE



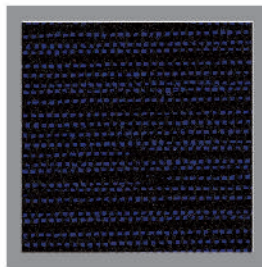
1009-TURQUESA



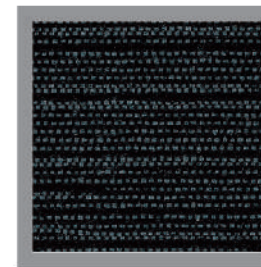
1005-OBISPO



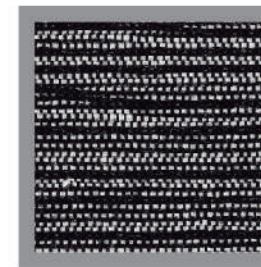
1019-LILA



1013-ELECTRICO



1002-OCEANO



1003-CEMENTO

